


### Rätikon Panoramatur




 **Time** 4.2 h


 **Distance** 8.3 km

 **Altitude at the start** 1420 m. ü. M.

 **Altitude at the end** 1475 m. ü. M.

 **lowest point** 1417 m. ü. M.

 **highest point** 2044 m. ü. M.

 **Ascent** 620 m

 **Difference in altitude**

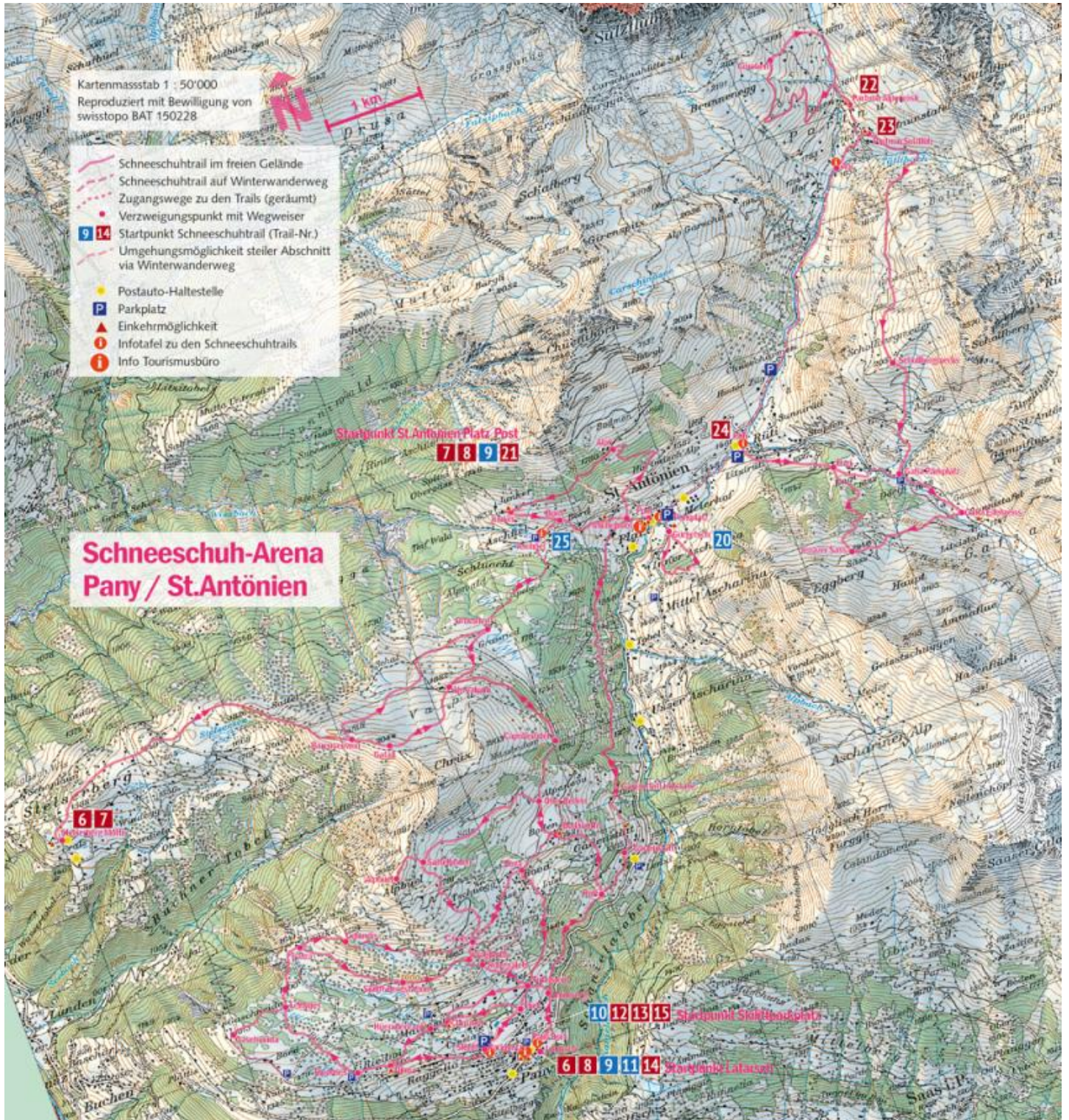
 7246 St.Antönien/GR (GR)

### Trail details

Region

<http://www.praettigau.info>







### Adressen

---

#### Contact

Prättigau Tourismus  
Sanaanggastrasse 6  
7214 Grüşch

+41 (0)81 325 11 11  
info@praettigau.info  
<http://www.praettigau.info>

